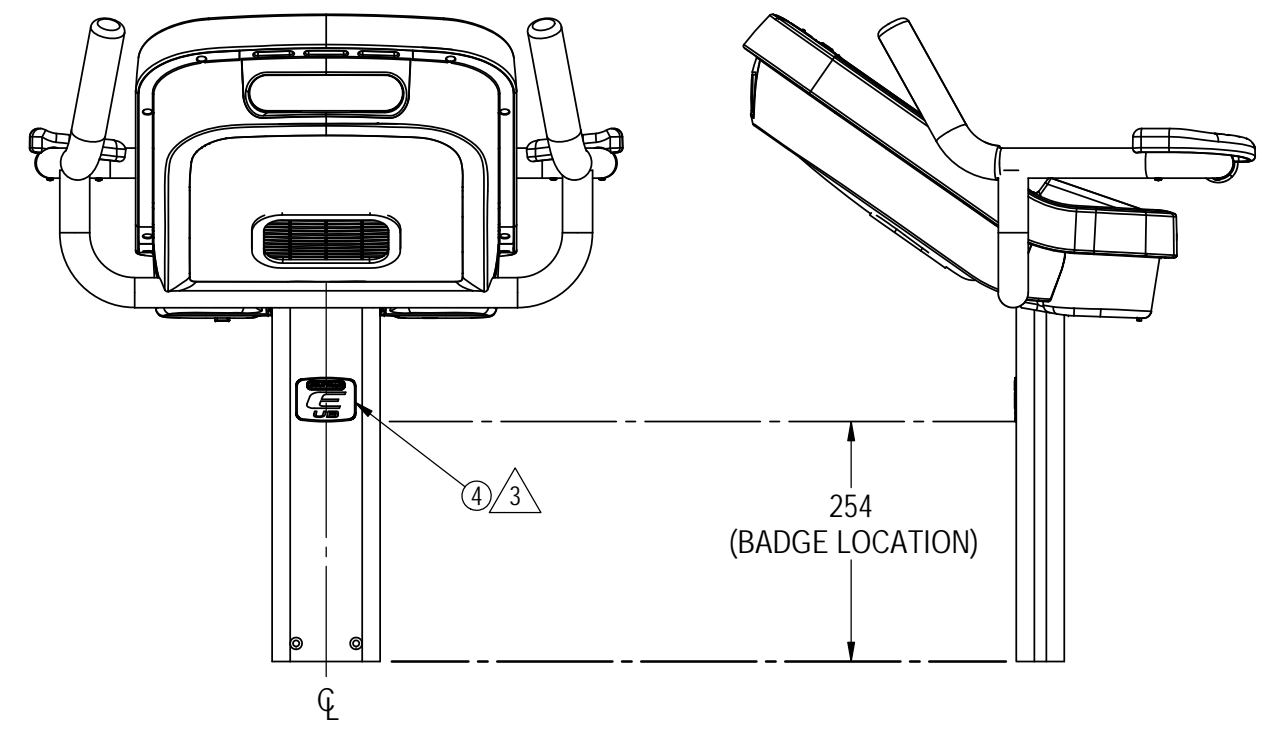
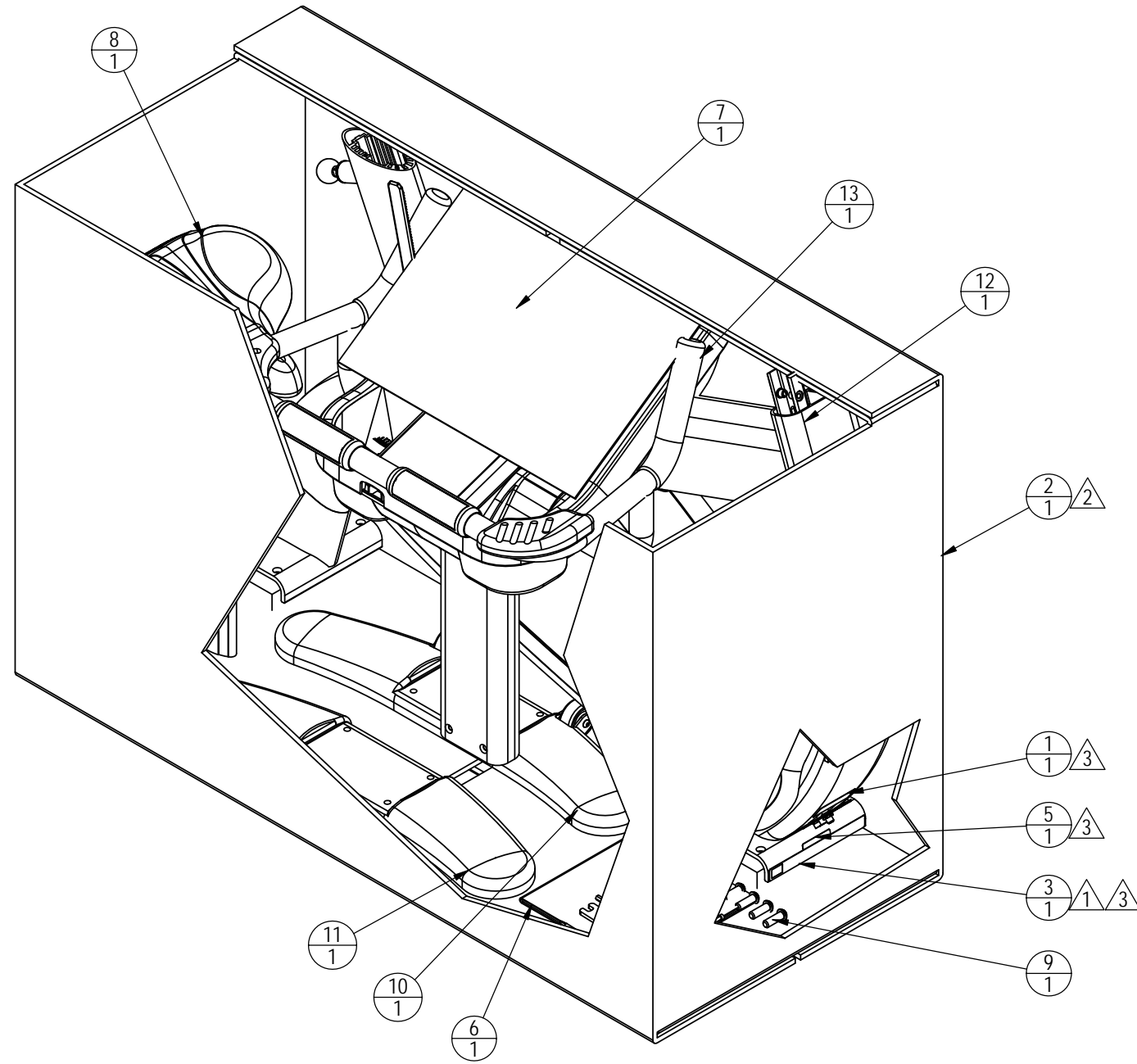


REVISIONS				
REV.	DATE	DESCRIPTION	ECO	BY
A	03-26-08	PRODUCTION RELEASE	11822	DN



ITEM	PART NUMBER	DESCRIPTION	QTY
1	050-1897	LABEL, FCC CLASS A, UB/RB	1
2	050-2042	PACKAGING, BOX, E-UB	1
3	050-2059	LABEL, ID, UB/RB PRO, GENERIC	1
4	050-2090	BADGE, PRODUCT, E-UB	1
5	050-2115	LABEL, MADE IN CHINA	1
6	620-7689	MANUAL, OWNER'S, E-UB & RB	1
7	620-7720	INSTALL, QUICK, E-UB	1
8	718-1100	ASSY, SEAT PORT, UB	1
9	718-5066	KIT, HARDWARE, UB	1
10	718-5106	ASSY, FOOT, FRONT, VLAD	1
11	718-5107	ASSY, FOOT, REAR, VLAD	1
12	718-5108	ASSY, BASE FRAME, UB PRO, VLAD	1
13	718-5174	ASSY, LED/HANDLEBAR, E-UB	1

- NOTES:
- 1 INFORMATION TO BE PRINTED ON SERIAL LABEL:
 - a) SERIAL NUMBER
 - b) MODEL
 - c) MANUFACTURING DATE
 - 2 INFORMATION TO BE PRINTED ON BOX:
 - a) SERIAL NUMBER
 - 3 CLEAN AREA WITH ISOPROPYL ALCOLHOL PRIOR TO PLACING BADGE/LABELS.
 - 4. TEST REPORTS CAN BE FOUND UNDER DOCUMENT PN 620-235-509-XX.

**DOCUMENT STATUS:
RELEASE**

NOTICE OF PROPRIETARY INFORMATION
THIS DOCUMENT SHALL NOT BE REPRODUCED NOR SHALL THE INFORMATION CONTAINED HEREIN BE USED BY OR DISCLOSED TO OTHER EXCEPT AS EXPRESSLY AUTHORIZED BY UNISEN

MATERIAL SEE BOM		TOLERANCES UNLESS OTHERWISE SPECIFIED X.XXX = ± .010" (0.25MM) ANGLES = ± 2° X.XX = ± .030" (0.76MM) FRACTIONS = ± 1/32 X.X = ± .050" (1.27MM) X = ± .125" (3.20)		UNISEN, INC. DBA STAR TRAC 14410 Myford Road Irvine CA 92606	
FINISH N/A		INITIAL DRAWN DN	DATE 02/06/08	PART NO 9-8040-MINTPO	REV A
VENDOR:		U.O.M. MM		TITLE E-UB8040, S/P, M, INT	
P/N: N/A		SCALE: 1:8		SHEET 1 OF 1 SHEET SIZE: B	